



**ATC550**

## Quick Start Guide of Handheld Thermal Imager

### PREFACE

Thank you for purchasing the new ATC550 Handheld Thermal Imager. In order to use this product safely and correctly, please read this manual thoroughly, especially the Cautions part.

After reading this manual, it is recommended to keep the manual at an easily accessible place, preferably close to the device, for future reference.

### LIMITED WARRANTY AND LIABILITY

WIPCOOL rend guarantees that the product is free from any defect in material and workmanship within one year from the purchase date. This warranty does not apply to damages caused by accident, negligence, misuse, modification, contamination and improper handling. The dealer shall not be entitled to give any other warranty on behalf of WIPCOOL rend. If you need warranty service within the warranty period, please contact your seller directly.

This warranty is the only compensation you can obtain. WIPCOOL rend will not be responsible for any special, indirect, incidental or subsequent damage or loss caused by any reason or speculation. As some areas or countries do not allow limitations on implied warranties and incidental or subsequent damage, the above limitation of liability and stipulation may not apply to you.

### Cautions

1. Use or store the product at specified operating or storage temperatures to avoid damage.
2. Do not aim the product at strong heat source, such as sun, laser device, spot-welder, etc.
3. Do not knock, toss, or shake the product and accessories.
4. Do not use dissolved or similar liquids on the product or cables.
5. Please follow the following instructions to wipe the device:
  - Non-optical surface: If necessary, use a clean and soft cloth to wipe the non-optical surface of the thermal imager.
  - Optical surface: Do not stain the optical surface of the lens when using the thermal imager. Especially not to touch lens with hands, cause it may erode the optical coating layer on the glass surface. When the optical surface is stained, wipe it carefully with a specific lens paper.
6. When using the device, please try to keep it stable and avoid violent shaking.
7. Please package device and its accessories into the carrying box if not needed.
8. Please do not disassemble the device avoiding product damage and loss of warranty rights.
9. Due to different batches, the materials and details of actual products may be slightly different from the graphic information. Please refer to the goods received.
10. The experimental data in the manual are theoretical values and all from WIPCOOL's internal laboratories, for reference only. Customers cannot use them as the bases for placing orders. If users have any questions, please contact customer service.

### 1. Product Introduction

ATC550 is a handheld thermal imager used in different occasions integrated imaging with temperature measurement, with light-weight and portable design, multiple functions, temperature measurement range of -20~550°C, center spot temperature measurement, and auto high/low spot tracking, equipped with LED light, laser pointer, high/low alarm, IP54, 2m drop-proof design, etc.

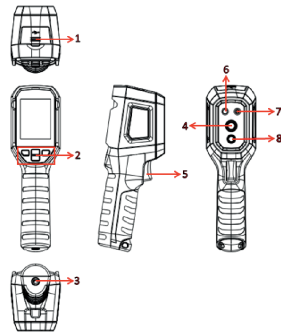
### 2. Product Features

- Temperature Measurement Range:-20°C~550°C
- IR Resolution: 160\*120
- High/Low Temperature Alarm
- LED light/Laser Pointer
- Rechargeable Li-ion Battery

### 3. Packing List

Items	Quantity
Infrared Thermal Imager	1
USB Cable	1
Quick Start Guide	1

### 4. Product Appearance

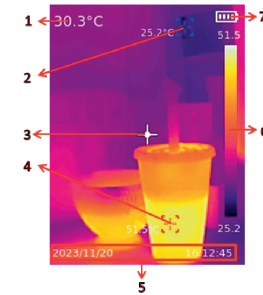


No.	Descriptions	No.	Descriptions
1	USB Type-C Interface	5	Trigger
2	Buttons	6	LED Light
3	Tripod Mount Hole	7	Laser Pointer
4	Infrared Camera Lens	8	Visual light camera lens

### 5. Buttons

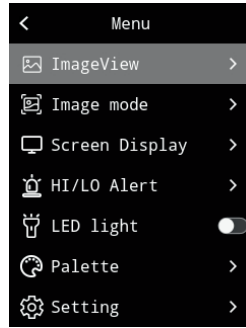
Buttons	Status	Short Press	Long Press
POWER	Power off	Power on	/
	Power on	Sleep	Power off
	Other interfaces	Return	/
OK	Main interface	Open the menu	/
	Photo viewing interface	Open the submenu	/
	Other interfaces	Confirm	/
UP	Any interface	Up	Up fast
DOWN	Main interface	Images Calibration	/
	Other interfaces	Down	Down fast

### 6. Display



No.	Descriptions	No.	Descriptions
1	Center spot temperature	5	Date & Time
2	Auto Lo spot tracking	6	Range bar
3	Center spot	7	Battery power
4	Auto Hi spot tracking		

## 7. Menu



Image/View	Enter it to check the image details or to delete.
Image mode	Switch Thermal/Digital/PIP /Fusion mode
On Screen Display	Display details of center spot, high/low spot, palettes, date and time in the main interface.
Hi/Lo Temperature Alarm	Turn on/off the temperature alarm/buzzer, and setup the high/low value of temperature alarm.
LED Light	Turn the light on/off
Palettes	Color change: Ironbow, Rainbow, Lava, Rainbow HC, Black Hot, White Hot, Red Hot, etc.
Settings	Languages: Chinese/English
	Temperature Units: °C/°F
	Adjustable Emissivity: 0.01~0.99
	Laser is shot out when press and hold the Trigger button in the main interface with laser function ON.
	Date & Time modification: time format, time, and date
	Screen Brightness changed: Low, Medium, High
	Auto Power Off time setup: 5 min, 10min, 30min, OFF.
	Auto Storage ON/OFF
	Data Clear
	Device Information: Model, Software, System, Firmware, Storage Capacity, Surplus Capacity, and SN.
Factory Reset	

## 8. USB Communication & PC Analysis Software

1. Refer to the Download and install the PC software.
2. Connect the USB cable with computer to navigate images and analyze data via the PC software.
3. Refer to the Software User Manual in the Help option to get help about how to use the PC software.
4. Do not unplug the USB cable when in the USB communication before cutting off the connection between device and computer correctly (Cutting off the connection is in the lower right side of the computer).

\*The contents of this manual are subject to change without prior notice\*

Made in China