



C110T
Crankshaft Driven
Super High Pressure Washer
Operation Manual

Please read this manual carefully before using this product.
Keep this manual properly for future reference.

1. Notices Before Usage

We would like to congratulate you on the purchase of your new high-pressure cleaner and thank you for your confidence in our products!
Your choice has fallen on an absolute quality product!
This high-pressure washers are characterized by their convenient and compact design as well as their high suitability for everyday use.
Highest precision and dimensional accuracy in addition to a technology package consisting of a multitude of details mark the difference when it comes to performance, safety and durability.
In order to facilitate handling of the high-pressure cleaner, the following pages are intended to further explain its use.

2. Product Intended Usage

The product is intended for cleaning areas and objects outside the house, tools, vehicles and boats. It's simply the best solution for an all-around industrial pressure washer to clean industrial environment and for facility management and maintenance needs.
Intended use is related to operation within 0°C and 40°C ambient temperature.

3. Technic Data

Voltage:	110V~60Hz or 230V~/50-60Hz
Max. Pressure:	110 bar
Operation Pressure:	90 bar
Input Power:	2.5kW
Inlet Water Pressure:	3bar
Flow Rate:	9L/min

Accessories



4. Important Safety Instructions

⚠WARNING

Read and understand all instructions before using the unit. Failure to follow all instructions listed below may result in electric shock, fire and/or serious personal injury.

- Always check the unit, hoses, fittings, etc. before each use.
- Do not fill with gasoline or any other flammable liquid.
- Do not operate in explosive atmospheres, such as in the presence of flammable liquids, gases or dust.
- Make sure there is adequate ventilation in the work area.
- Stay alert, watch what you are doing and use common sense when operating this unit.
- Keep bystanders, children, and visitors away while operating this unit.
- Turn unit off and relieve pressure in the hose when done.
- Do not use while tired or under the influence of drugs, alcohol, or medication.
- Do not overreach or stand on unstable support. Keep proper footing and balance at all times.
- Wear rubber gloves, rubber boots, goggles or face-shield, etc. Detergents and chemicals may cause injuries to the eyes and skin. Protect yourself from direct skin.

- Do not use any acid or cleaners that contain sodium or potassium hydroxide!!
- Do not mix chemicals!! Mixing incompatible chemicals may cause damage to the unit or cause dangerous, life-threatening chemical reactions.
- Do not use the unit if it does not operate properly or has been damaged.
- Do not try to service the unit yourself - call your local distributor for assistance. Service must be performed only by qualified repair personnel. Service performed by unqualified personnel could result in a risk of injury and voids the warranty.
- Never point the spray gun at anyone. Do not direct stream at eyes or mouth.
- Always turn machine off after use or when tank is empty. Running a water pump "dry" drains the battery and may cause damage.
- Do not spray the unit with water or chemicals.
- Do not allow the unit to freeze or leave in freezing temperatures.
- Use only approved accessories and replacement parts.
- Follow maintenance procedures outlined in this manual.
- Never submerge appliance in water.
- Do not allow unit to freeze.
- Do not remove cover plate or attempt to disassemble appliance.
- Replace damaged hose immediately. Otherwise, hose may burst and potentially cause serious injury.

5. Operation

1. Preparation before start up
Before starting the machine, check whether the power line of the washing machine is connected reliably and correctly. Before starting the machine, check whether the nuts and screws of the machine are loose
2. Water pipe connection
Connect the connector of the high-pressure rubber hose with the connector on the water outlet of the machine, and connect the other end with the connector on the water gun.
3. Nozzle selection
The gun and nozzle used in this machine must use the matching gun and nozzle provided by the original factory.
4. Put the water inlet pipe on the tap.
Connect the water source and power supply, pull the trigger of the water gun, and use it normally after the air in the water pump is exhausted.
5. If the water tank is used to supply water to the machine, one end of the water inlet pipe shall be connected with the high-pressure pump water inlet pipe (rubber sealing gasket must be installed), and the other end shall be equipped with a randomly configured water inlet filter to prevent foreign matters from being sucked into the water tank, and the water tank level shall not be lower than the machine. Do not install the high-pressure water gun nozzle first, pinch the high-pressure water gun trigger, turn on the main switch of the cleaning machine, when there is water flowing out of the nozzle, continue to work for 1 minute, drain the air in the high-pressure pump, and then install the high-pressure nozzle to use normally.
6. During cleaning, the distance between the nozzle and the cleaned surface should not be too far, generally not more than 10 cm. Because the impact force of the nozzle decreases with the increase of the spraying distance.
7. After cleaning, release the trigger and close the water gun, the overflow valve will open automatically, and the high-pressure pump will form internal circulation. During the internal circulation, the water temperature in the pump will rise. It is recommended that the internal circulation time should not exceed 3 minutes. It is recommended to turn off the power switch and open the water gun trigger to discharge the internal pressure at the same time.
8. During use, there is water dripping from the drain hole of the pump body, which does not affect the use and belongs to normal operation.
9. After the machine is idle for a long time, the motor makes a buzzing sound (the motor does not run). Press the stop button immediately and repeat it for two or three times, and the motor can run; if the motor still cannot be started, please remove the fan housing of the motor and turn the fan blade by hand for two or three weeks before starting the motor. Reinstall the fan housing under shutdown condition.

6. Maintenance

After use/Storage

Clean the exterior of the machine thoroughly using a soft brush or cloth. Do not use water, solvents or polishes. Remove all debris, especially from the ventilation slots.
End of season storage: Drain water out of pump running motor for a few seconds. Pull trigger to release all water. Do not place other objects on top of the machine. Ensure cables are not trapped when storing. Do not kink high pressure hose.

Oil Change

The oil plug installed on the pump body is designed for the convenience of adding and draining oil. Before use, please check whether the oil level is normal. After the new machine is used for 20 hours, remove the oil drain plug and drain the original oil. After pouring clean kerosene into the tank for several times, add the recommended CD15W-40 oil.) Tighten the oil plug to the middle of the oil level mirror and replace the oil once every 200 hours. This is very important to extend the service life of the washer.

7. Trouble shooting

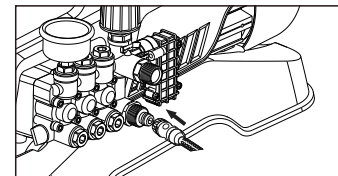
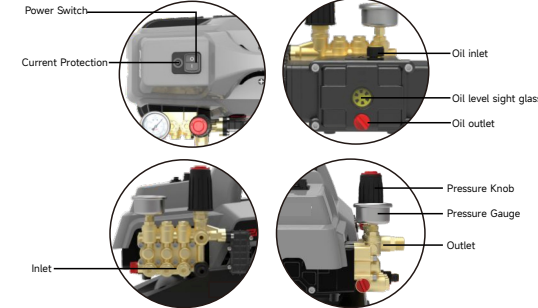
Problem	Cause	Action
Pump can't start	1.AC no power supply	1.Check power
	2.AC voltage not correct	2.Make sure the input voltage within rated voltage ±5%
	3.Temperature is too low	3.Increase ambient temperature
Pressure is not enough	1.There is air in the water pipe	1.Remove the gun rod and work for a few seconds to release air
	2.The water inlet is blocked	2.Clean the water inlet filter
	3.There is impurities inside	3.Remove internal impurities
Water leakage	1.The connector is not tight enough	1.Check the connector
	2.O-ring damaged	2.Change the O-ring
Running with noise	1.Air sucking inside	1.Check the water level and inlet pipe
	2.Inner parts damaged	2.Repair and change the parts

8. Warranty

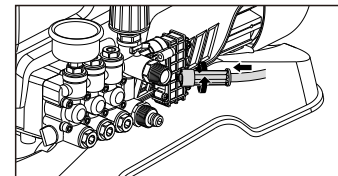
This unit has been carefully tested and inspected and is warranted to be free from defects in material or workmanship. The manufacturer will, under this warranty, repair or replace any parts which prove, upon examination, to be defective. This warranty is valid for one year from date of purchase by original purchaser.

This warranty excludes accessories, unusual wear, abuse, damage resulting from an accident, or unreasonable use of this machine. It is recommended that any repairs be contact your local distributor or contact manufacturer directly.

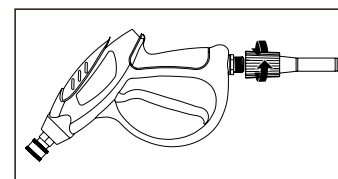
The manufacturer reserves the right to improve products. Contact manufacturer for the latest configuration and uses.



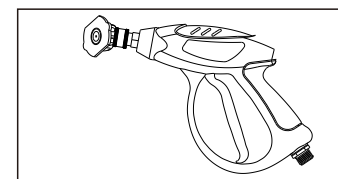
Connect with inlet hose



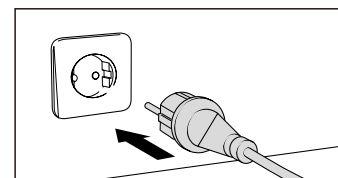
Connect with outlet hose



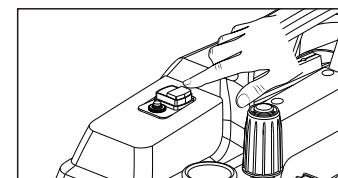
Connect with spray gun



Connect with spray nozzle



Power on



Switch on