



 [YouTube](https://www.youtube.com) www.wipcool.com

Scan us for more details

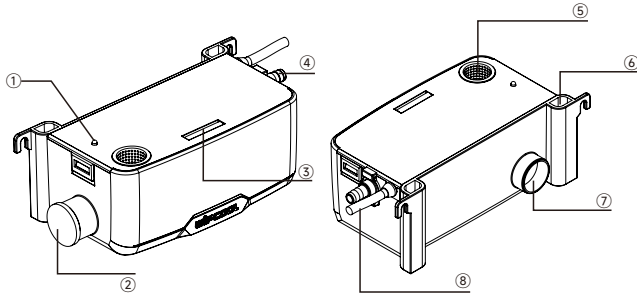
WIPCOOL[®]
IDEAL PRODUCTS FOR HVAC



**Mini Tank
Condensate Pump
P40/P110**

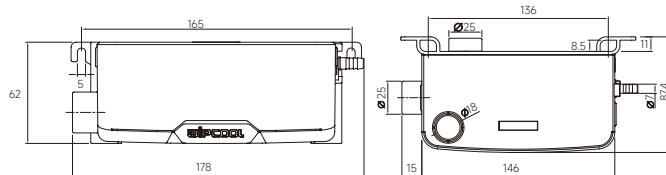
-Operation Manual-

1. Product Indication Chart



No.	Description	No.	Description
①	Power indicator	⑤	Top inlet
②	Side inlet	⑥	Rod hole
③	Level-meter	⑦	Back inlet
④	Outlet	⑧	Power cable

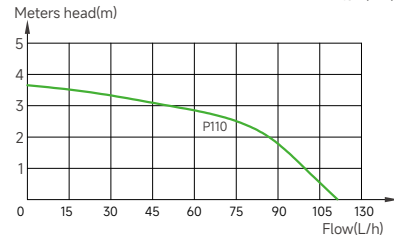
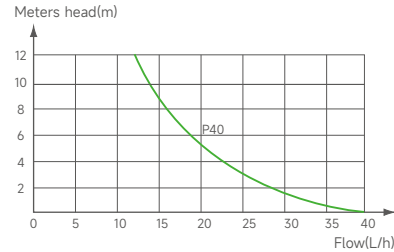
2. Dimensions









3. Technic Data

Model	P40	P110
Voltage	100-230V~/50-60Hz	
Discharge head(max.)	10m	3.5m
Flow rate(max.)	40L/h	110L/h
Tank capacity	200ml	
Power consumption	3W	10W
Sound level at 1m	21dB(A)	25dB(A)
Ambient temp.	0°C-50°C	

4. Flow Rate Chart

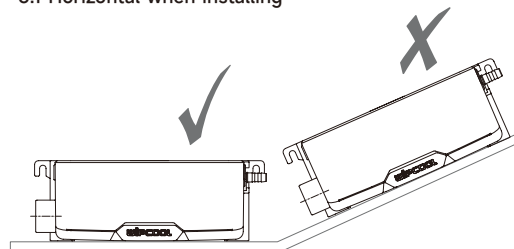


5. Safety Instructions

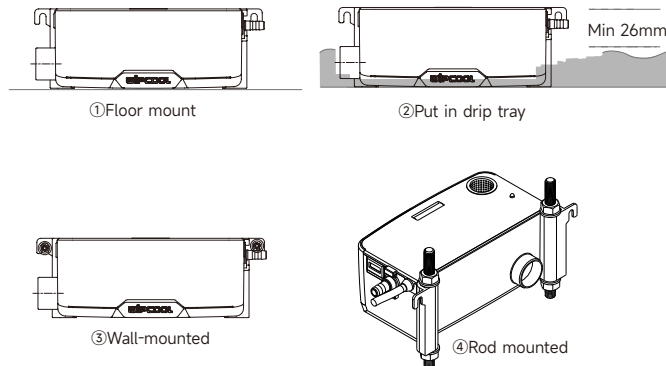
1.  Place the tank horizontal when installing, do not tilt the pump. Check whether the level drop is centered; if there is tilt, adjust the water level before using it.
2.  Do not place electrical appliances or valuables under the condensate pump to avoid loss caused by power failure or water leakage.
3.  Non - professional personnel should not install it to avoid danger.
4.  The condensate pump is not waterproof. Do not place it in the open air, outdoors or in a place prone to flooding.
5.  The condensate pump power supply needs to be independent to maintain permanent power supply. For details of connecting with air conditioning system, please refer to the wiring diagram.
6.  It is prohibited that the water inflow is bigger than our stated flow rate, which will easily cause the motor to work continuously and fail. Instant big water inflow will also cause the condensate pump fail to discharge water in time, leading to water leakage.

6. Installation Procedure

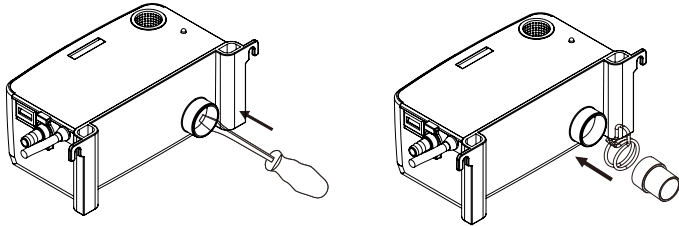
6.1 Horizontal when installing



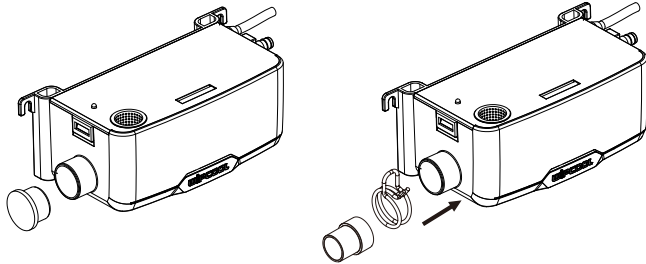
6.2 Four way installations



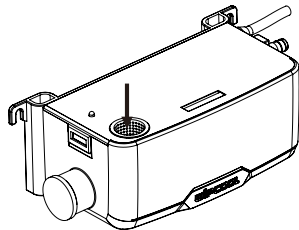
6.3 3 Inlets



Back inlets

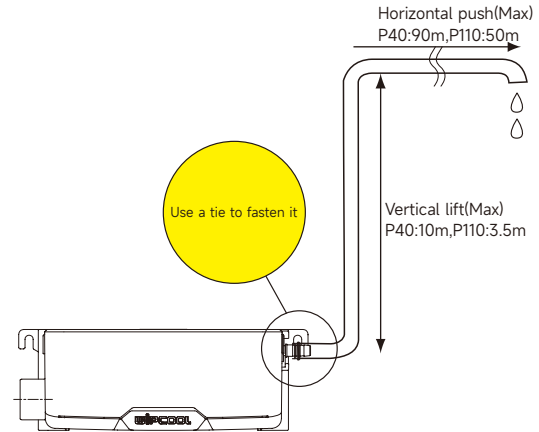


Side inlets



Top inlet

The inlet pipe must be fitted so that it pushes fully through the inlet bung into the opening and cannot come loose.



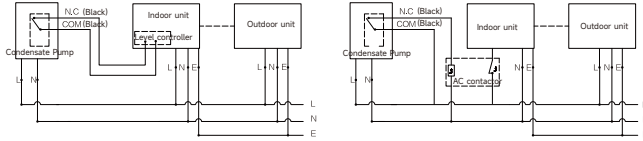
6.4 Connect power supply and signal line;

6.5 Check the correct power supply. Connect the three brown&blue wire which marked "POWER" with the air conditioners connection or socket connection, and pay attention to the following power cord color.

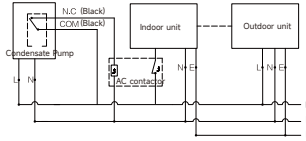
6.6 If the signal control wire (two core) connects with the air conditioner lines directly, when the condensate pump is not working properly, the pump circuit can trigger a signal to shut down or cut off the air conditioner running directly.

Warning

Please note the distinction between the power line and signal line, wrong wiring will result in damage to the drain pump and ensure consistent product identification voltage.



If the air conditioner does not have level controller it can be connected to other alarm devices or refer to figure 2.

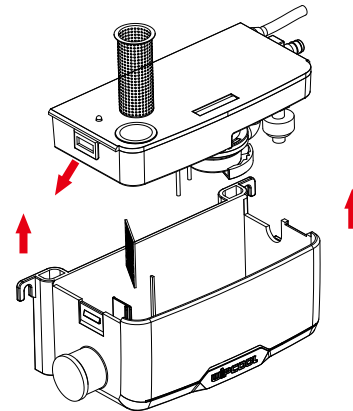
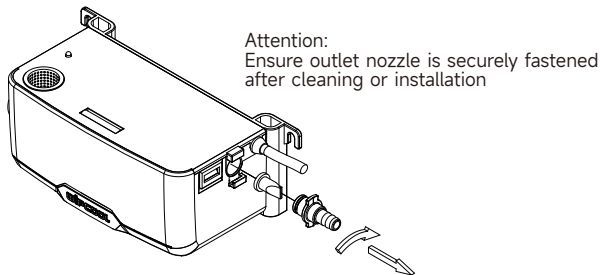


If there is no level switch, it can also use an appropriate AC contactor to control the air conditioning power.

Power line: (L)Live:Brown; (N)Neutral:Blue;
Signal line:(NC):Black; (COM):Black

6.7 After the system is properly connected, ensure that the pump is powered on, run the air conditioner and observe whether the pump is working normally. If the pump does not work properly, please contact a professional for repair.

6.8 When the water outlet nozzle is blocked, it can be manually disassembled and assembled after the matter is cleaned. The detailed steps are shown in the following figure.



7. Trouble shooting

Problem	Cause	Solution
Pump runs all the time	1.Installation is not horizontal	Adjust the tank make it level
	2.There is sludge inside tank	Clean the inside of tank and probe
Pump makes loud noise	1.The water is siphoning back in the pump	Check whether the outlet pipe is lower than pump thus result in siphoning, raise the condensate pump position
Pump can't start working	1.Installation is not horizontal	Adjust the tank, check water level
	2.The power can't reach pump	Check power supply
	3.The voltage isn't correct	Check the voltage

Every six months or more often the reservoir should be removed, taking care to dean the filter, float (Probe)and reservoir thoroughly prior to reassembly. We recommend this is done in the Spring and the Autumn, using a chemically compatible anti-bacterial wash.