

Supermarket Condensate Pump
P120S/P360S
OPERATION MANUAL

Supermarket Condensate Pump



P120S

P360S

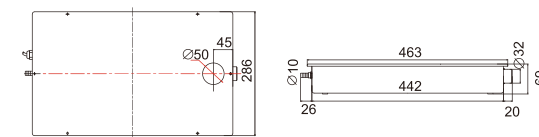
Thank you for buying WIPCOOL supermarket condensate pump. This manual gives instructions on the correct installation. It is important that you follow these instructions carefully.

1. Notice for Use

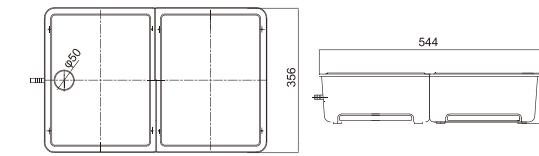
1. Before carrying out any operation on the pump, make sure the installation is disconnected from the power supply.
2. The pump has been evaluated for use with water only.
3. Risk of electronic shock. This pump has not been investigated for use in swimming pool or marine areas.
4. If the cord is damaged, it must be replaced with a special cord or assembly available from the manufacturer or its service agent.
5. Do not run this pump dry.
6. Always ensure the metal magnet in the float is facing upward. Always ensure the reservoir is sitting flat and horizontal.
7. The pump is ideal for most working and living environments. It is not recommended where the environments are oily or particularly dusty.
8. Acceptable for indoor use only.
9. This condensate pump is non-submersible.

2. Dimension drawing

P120S



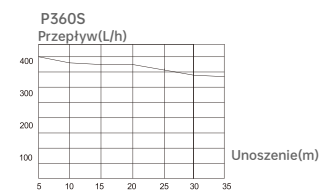
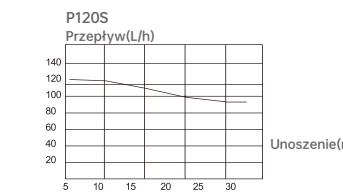
P360S



3. Technical specification

Model	PC-120S	PC-360S
Voltage	230V~/50-60Hz or 100-120V~/50-60Hz	
Max. water temp	0-75°C	0-40°C
Discharge head	Max.30m(98ft)	Max.36m(118ft)
Flowrate	Max.120L/h(32GPH)	Max.360L/h(95GPH)
Tank capacity	3.0L	11L

4. Maximum recommended head(m)

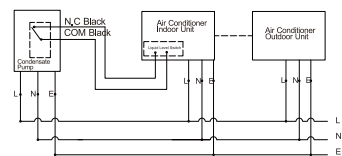


5. Installation

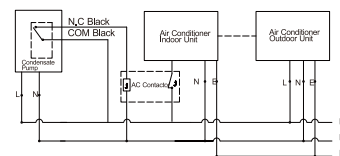
1. Make sure the power is cut off
2. Fix the pump well, make sure the pump is in level
3. Inserted the discharge pipe into one of the water entry (using tools to dig through the water entry), and make sure the pipe does not bend;
4. According to the level of the water, use a suitable length of the tube(outer diameter of 10mm) to connect the drainage fating of the pump, and fasten with cable ties in the accessory package.
5. Check the correct power supply. Connect the three core wire which marked "POWER"with the air conditioners connection or socket connection, and pay attention to the following power cord color.
6. If the signal control wire (two core) connects with the refrigeration lines directly, when the drain pump is not working properly, the pump circuit can trigger a signal to shut down or cut off the refrigeration equipment running directly.

⚠ WARNING

Please note the distinction between the power line and signal line, wrong wiring will result in damage to the drain pump and ensure consistent product identification voltage.



If the refrigeration equipment does not have liquid level control terminal, it can be connected to other alarm devices or refer to figure 2.



If there is no liquid level switch, it can also use an appropriate AC contractor to control the air-conditioning power.

Power cord: (L) fire wire: Brown (N)zero line: Blue (E)ground wire: FlowerSignal line: (NC) normally closed: Black (COM) common line: Blac

7. If the pump can't work normally, the system will be cut off automatically, please contact the qualified person to maintain it.
8. If the system is properly connected, ensure that the pump has been electrified, running the air-conditioner to observe if the drainage pump is working properly ;

6. Troubleshooting

Problem	Cause	Action
Pump runs all the time	1. Installation is not horizontal	Adjust the tank make it level
	2. There is sludge inside tank	Clean the inside of tank and float
Pump makes loud noise	1. The water is siphoning back in the pump	Check whether the outlet pipe is lower than pump thus result in siphoning, raise the condensate pump position
Pump can't start working	1. Installation is not horizontal	Adjust the tank, check water level
	2. The power can't reach pump	Check the voltage
	3. The voltage isn't correct	Check power supply

7. Important service guide:

Every six months or more often the reservoir should be removed, taking care to clean the filter, float (Probe)and reservoir thoroughly prior to reassembly. We recommend this is done in the Spring and the Autumn, using a chemically compatible anti-bacterial wash. Take great care to replace the float with the magnet facing upwards



8. Warranty

This warranty covers all arts with material or manufacturing faults. The buyers only remedy is the replacement or repair of the defective arts. In no case can labor costs and any on sequential damage be cited as a basis for a complaint. Any returned units must be complete, We are unable to accept any liability in case of nonconforming installation or noncompliance with the specifications or maintenance recommendations.

More Condensate Pump For Choice:

 Wall-mounted P18(18L/h) P36(36L/h)	 Mini Split P16(18L/h) P32(32L/h)	 Mini Split Slim P12(12L/h)
 Corner P12C(12L/h)	 General Tank P180(180L/h)	 Low Profile P380(380L/h)
 High Lift Tank P580(580L/h)	 Atomization Pump P15J(15L/h)	More Product Stay tuned!



Scan us for more details